

Maintenance: For smooth and long-lasting operation of the product; Every 6 months of infrequent use or at the end of 270 hours of continuous use, the gearbox must be opened, cleaned, and the oil must be changed. Use of regular oil will shorten the life span of the gear. **baseh** Special oil can be obtained from the authorized service centers at a reasonable price. While closing the gear housing, silicone liquid seal should be used. The place where the upper bearing is seated and the liquid seal should be made on it. Carry out the care of the used brushcutter according to its own instructions. If you have any further questions, please contact your authorized dealer or service.

baseh

MINI TILLER

INSTRUCTION MANUAL



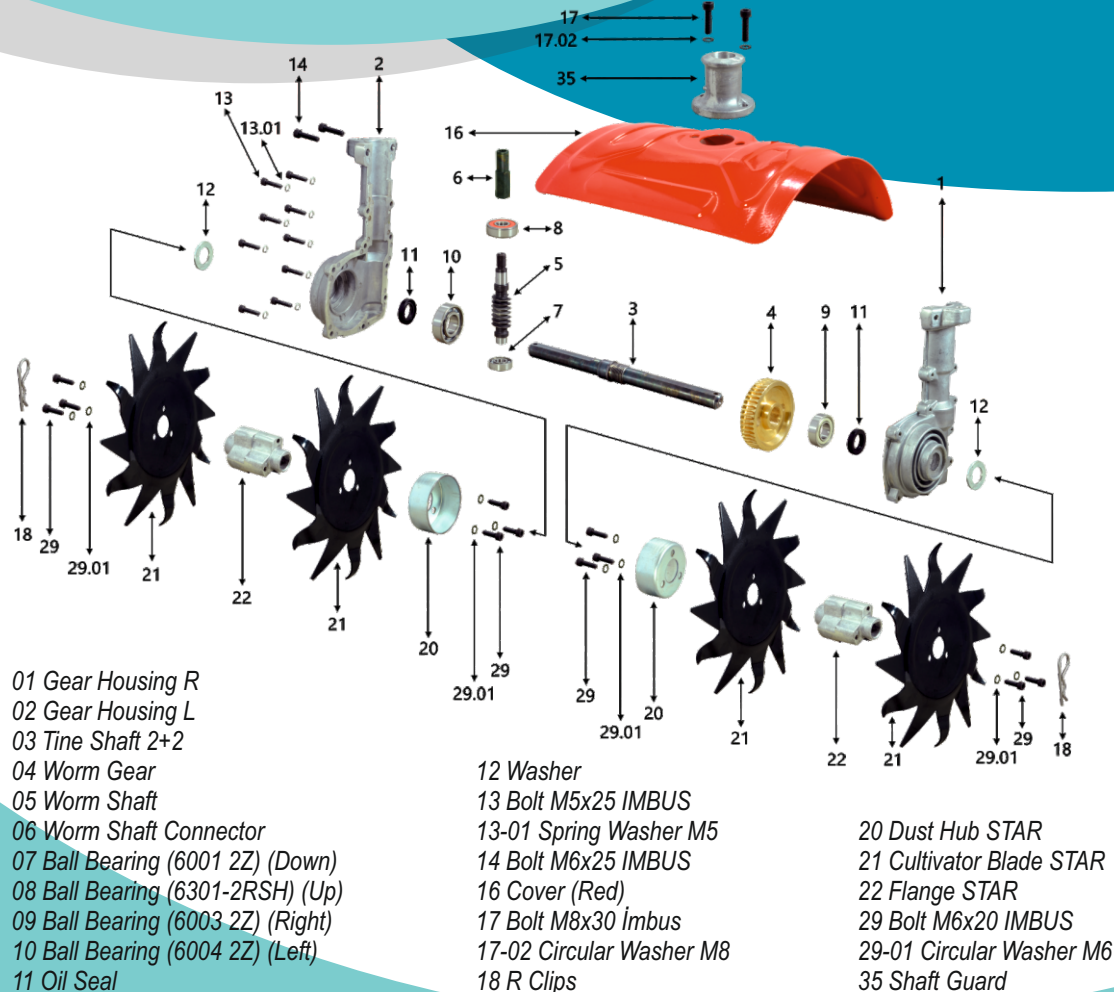
ASSEMBLY

SAFETY FIRST :

Because of tiller blades are sharp, please make sure that the engine is not working and wear protective gloves when assembling to the brushcutter, changing or adjusting the blades, weeding, bush curling or stone jamming between blades. The tiller user must be trained in the use of tilling and brushcutting. Neither used as brushcutter nor used as mini tiller apparatus should be used protective equipment. All safety rules for trimmers and brushcutters are also applicable to the **baseh** Mini Tiller Apparatus.



USAGE



- 01 Gear Housing R
- 02 Gear Housing L
- 03 Tine Shaft 2+2
- 04 Worm Gear
- 05 Worm Shaft
- 06 Worm Shaft Connector
- 07 Ball Bearing (6001 2Z) (Down)
- 08 Ball Bearing (6301-2RSH) (Up)
- 09 Ball Bearing (6003 2Z) (Right)
- 10 Ball Bearing (6004 2Z) (Left)
- 11 Oil Seal

- 12 Washer
- 13 Bolt M5x25 IMBUS
- 13-01 Spring Washer M5
- 14 Bolt M6x25 IMBUS
- 16 Cover (Red)
- 17 Bolt M8x30 Imbus
- 17-02 Circular Washer M8
- 18 R Clips

- 20 Dust Hub STAR
- 21 Cultivator Blade STAR
- 22 Flange STAR
- 29 Bolt M6x20 IMBUS
- 29-01 Circular Washer M6
- 35 Shaft Guard



Box Contents:
baseh Mini Tiller Apparatus,
 Pipe Protection,
 5 mm, 6 mm Allen Keys,
 assembly & instructions
 from the box.

THANKS FOR CHOSING **baseh** MINI TILLER APPARATUS

Mounting the apparatus:

The shaft pipes of the brushcutters and the inside pin shafts are produced in various thicknesses and types. After removing the gear group on your brushcutter, check the shaft end and pipe diameter. Connection adapter of appropriate diameter and suitable for the shaft end (square or 7-9-10 stars) should be used.

Insert the suitable Connection Adapter onto the Worm Shaft tooth inside the mini tiller.

Insert the **Shaft Guard** first and then the **Red Cover** to the brushcutter shaft.

Insert the **baseh** mini tiller apparatus into the shaft pipe, make sure that the shaft pin enters the worm shaft connector. Tighten the **Side Bolts** as shown in the picture and fix it to the pipe.

Finally tighten the **Upper Bolts** after placing the Red Cover on the Mini Tiller Apparatus and the shaft guard on top. Your **baseh** Mini Tiller is ready for use.

For switching positions;
* Make sure engine is off.
* Remove retaining pins from the tines.
* Remove the tines from the axle.
* Place the tines other axle.

Tilling Position:

To hoe soil you must assemble the tines as shown above. As you pull the tiller apparatus backward during the tilling, you will give extra resistance to the tines, so they dig deeper and deeper. It also erase your footprints and keeps the soil soft and fluffy when you go backward. With this position it works to soil down to 26 cm deep.

For switching positions;
* Make sure engine is off.
* Remove retaining pins from the tines.
* Remove the tines from the axle.
* Place the tines other axle.

Cultivating Position:

To remove the weeds, you must assemble the tines as shown above. Use it by slicing weeds and pushing them slowly until they are buried in the soil and then pulling them back. Long grass, filamentous plants or long weeds can wrap in tines. If the plants are too large and long, use cutting tools to shorten the crops then start cultivating. If the crops are shortened but still locks the tines, then stop the engine and clean the blades. With this position it works to soil down to 7 cm deep.

Tilling

Position

Cultivation

Position